



Yotei-zan Jinja-no-Sawa Route

羊蹄山 Ski Tour Map 1:25000



0 250 500 750 1,000 m

1cm on the map equals 250m on the ground
Magnetic declination: 9° 38' W

Map by hokkaidowilds.org CC BY SA 2021/01/14

Symbol Key (some may not be present)

	Route (time between points)		Contour lines (100m, 10m)
	National Highway		Power transmission lines
	Prefectural Road		Trees/shrubs
	Municipal Road		Rocks/cliffs
	Minor Municipal Road		Onsen (hot spring)
	Walkway		Fumerole
	Bus route (bus stop)		Highway number
	Designated campsite		Hut



ONLINE ROUTE GUIDE - Please visit the full route guide for route description, GPS file, and safety notes: <https://hokw.jp/yotjin>

THIS IS A GEOREFERENCED PDF - Download the free Avenza Maps® app for iPhone and Android to see your location in real time: <https://hokw.jp/geoyji>

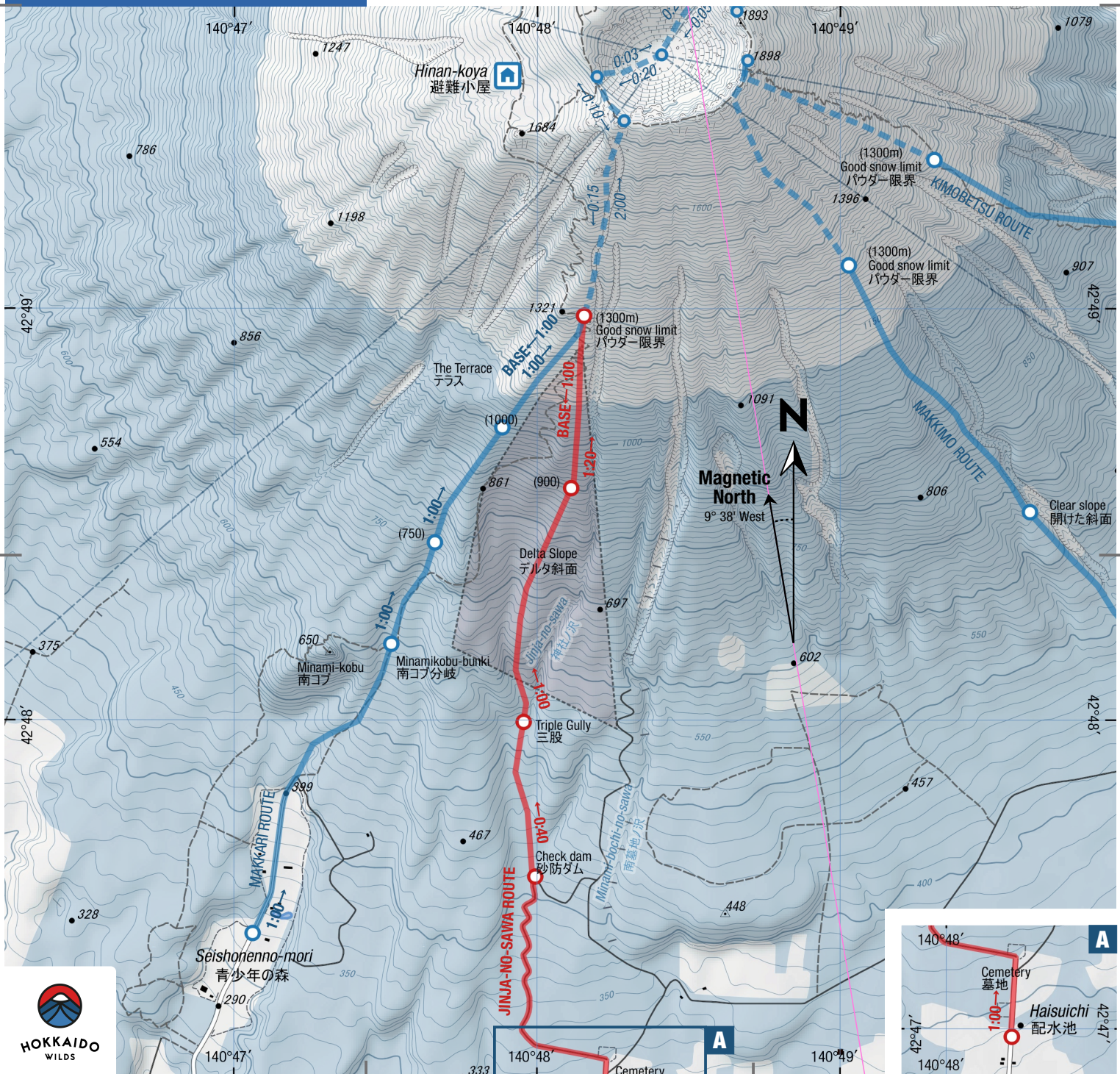


Japanese Map Glossary

Romaji	Kanji	English
bunki	分岐	junction
cho	町	town
dake/mine	岳/峯	peak
eki	駅	station
goya/koya	小屋	hut
hinangoya	避難小屋	shelter
ike	池	pond
kawa/gawa	川	river
kako	火口	crater
ko/mizumi	湖	lake
kyo	峡	gorge
numa	沼	pond
onsen	温泉	hot spring
sawa	沢	stream
taira/daira	平	plateau
tani/dani	谷	valley
taki	滝	waterfall
toge	峠	pass
yama/san/zan	山	mountain

この地図の作成に当たっては、国土地理院長の承認を得て、同院発行の基礎地図情報及び電子地形図（タイル）を使用した。（承認番号平30情使、第867号）。また、1/25,000植生図GISデータ（環境省生物多様性センターも使用し、hokkaidowilds.orgが作成・加工したものである）。

We created this map using the Geospatial Information Authority of Japan digital basemap (tiles) and basemap data, with the Authority director's permission (no. Hei-30-joshi, dai-867go). We also modified 1:25,000 scale vegetation map data created by the Biodiversity Center of Japan (<http://gis.biodic.go.jp/>).



Yotei-zan Jinja-no-sawa Route



 5hrs Time	 1050m Total Climb	 1300m Highest point
 11km Distance	 6/10 Difficulty	 Dec-May Best season

The Yotei-zan (羊蹄山, 1898m) Jinja-no-sawa Route (神社ノ沢コース) - also known as the Cemetery Route - gives prime access to the locally well-known Delta Slope (デルタ斜面). This roughly triangular south facing area, fanning out from around 1250m down to 600m, is a smörgåsbord of terrain, with gloriously well-spaced trees. Even on a busy weekend, it is unlikely skiers will struggle to find their own untracked line. Of all the popular routes up Yotei-zan, this route is arguably the most suited to lapping, even if the weather is unsuitable for venturing into the alpine. Invest in a good solid skin track, and lap to your heart's content. Like all routes on Yotei-zan, the most consistent skiing on this route is to be had from below 1300m.

LOCATION

Yotei-zan is a large free-standing volcano

near the Niseko ski resort area in southern Hokkaido. This ski touring route up Yotei-zan heads up from the Makkari Town cemetery.

GENERAL NOTES

As mentioned above, the main draw on this Yotei-zan backcountry skiing route is the large 'Delta Slope', which is perfect for lapping. While it's unlikely you'll find this area tracked out, it is always worth hitting this route early to get in a few solid laps. The downside of the Jinja-no-sawa route as compared with the nearby Makkari route is that it begins at a lower elevation and has a large flat skin in and ski out. Splitboarders will probably want to change to ski mode to get out; it's not an ideal snowshoe route.

The Delta Slope provides a range of skiing options in the SW to SE aspect and is generally somewhat sheltered from the prevailing NW winter winds off the Sea of Japan. There are relatively safe skinning options through trees to about halfway up the slope. Beyond this be aware of potential stability problems and, in particular, be aware of the steep headwall and corniced ridge on lookers left.

ROUTE TIMING AND NOTES

Skiers should allow about 4 hours from the carpark to the 1300m point, beyond which the snow conditions often turn to ice and rime. For most skiers, we recommend dropping from around 1300m, for a one-hour descent back to the cemetery.

This route is not marked. From the cemetery, head along a forestry road for about 1200m; the road follows an obvious jaw-bone shape and in higher snow years you may want to cut the corner off. A small erosion-stop dam will appear on the Jinja-no-sawa creek. After crossing the creek and climbing a short way, the large Delta Slope (as it is called locally) will come into view. Progressing towards this slope, the route slowly gains altitude through well-spaced trees on lookers right - your egress route is back down this creek so remain aware of where your are oriented in relation to your tracks in.

Once at the three-gully intersection point at 530m, it's tempting to head up the first main ridge, but the less obvious ridge further up to the lookers right is much more manageable on the climb. By this point views of Makkari Village below, as well as Lake Toya and Konbu-dake should be in view. By the 700m point, the trees should have spaced out even more. From this point up to around 1400m, there are views

up the slope of what is called the Delta Slope - a roughly triangular wide open slope with sparsely spaced trees, at an angle of about 30 degrees. Perfect for skiing. The head-wall at the top of the Delta Slope does steepen significantly so be aware of overhead avalanche hazard if stability is a problem. Beyond around 1400m the snow typically deteriorates considerably, with icy conditions often requiring crampons. In the spring skiing months, it's possible to get to the crater on skis, but it's very steep - a whippet or similar is recommended for self-arrest.

TRANSPORT

By car: The road leading up to the town cemetery is snow-cleared, but make sure to park well to the side of the road in order to keep the way clear. Don't park in the snow-clearer's turn-around spot.

Public transport: From JR Kutchan train station, take the Donan Bus Company bus bound for Rusutsu Resort. Get off at the *Yotei-shizen Koen Iriguchi* (羊蹄自然公園入口) bus stop. There's about one bus every two hours, the trip takes 30 minutes, and costs 670yen one way. As of December 2019, the earliest bus is at 6:50am, arriving at the *Yotei Shizen Koen Iriguchi* bus stop at 7:12am. It's a 20 minute walk (or skin) from the bus stop to the trailhead near the town cemetery. To return to JR Kutchan train station, there are buses from the *Yotei Shizen Koen Iriguchi* bus stop at 12:40pm, 3:34pm, 5:35pm, and the last is at 7:45pm. Note that by 5:35pm, it will be dark. Sunset is around 4:30pm during December to February in the Niseko region.

SAFETY NOTES

This free-standing volcano is exposed to the weather from all sides and it has the potential to get pretty wild pretty quickly; your escape is a rapid descent and so pay attention to potential routes as you climb. Like all routes on Yotei-zan, if you're shooting for the summit this may be one of the few times you'll use your ski crampons and boot crampons in Hokkaido.

ONSEN NEARBY

The nearest onsen to the trailhead is Makkari Onsen (真狩温泉, 500yen), which is 5 minutes by car from the trailhead. Open from 11am till 9pm, they have great outdoor baths, and an attached restaurant. Closed on Mondays. ■

ONLINE ROUTE GUIDE

Please visit the full route guide for GPS file, interactive map, and extra safety notes: <http://hokkw.jp/yotjin>



Disclaimer The information on this map was derived from digital databases provided by the Geospatial Information Authority of Japan and the Biodiversity Center of Japan. Care was taken in the creation of this map. HokkaidoWilds.org cannot accept any responsibility for errors, omissions, or positional accuracy. There are no warranties, expressed or implied, including the warranty of merchantability or fitness for a particular purpose, accompanying this product. However, notification of any errors will be appreciated.

MAP | Rob Thomson
TEXT, PHOTOS | Rob Thomson, Chris Auld

hokkaidowilds.org 2020/02/10

MAP FOLD & LAYOUT CONCEPT | Dominika Gan

Unless indicated otherwise, all content on this PDF (pages 1 to 1) is licensed under a Creative Commons Attribution-ShareAlike 4.0 International License (CC BY-SA 4.0). Please attribute <author-name> (hokkaidowilds.org), and let us know so we can link to your work. E.g., "Photo by Rick Siddle (hokkaidowilds.org)"



PRINTING INSTRUCTIONS

STEP 1

Load your printer with A4 printer paper (210mm x 297mm). If you've only got Letter size (215.9mm x 279.4 mm), just follow the instructions below. You'll achieve an accurate scale, but the map will be clipped a little at the top and bottom.

STEP 2

Open the print window by clicking on File > Print (or hitting Ctrl + P on your keyboard).

STEP 3

Make sure "Actual Size" is selected.

STEP 4

For double-sided printing, select "Print on both sides of paper".

STEP 5

For best results, select the highest quality print option available on your printer (settings will vary).

STEP 6

You won't need this instructions page, so just select the pages that don't include this instruction sheet.

STEP 7

Click "Print".

PLEASE PRINT AT 'ACTUAL SIZE' (NO SCALING)

The 1:25,000 scale used in the map is accurate if the PDF is printed without scaling (i.e., ACTUAL SIZE). Follow the instructions on this page to ensure an accurate rendering of the scale.



Figure 1. Ensure "Actual Size", and Pages 1-4 are selected (Windows).

ORIGAMI INSTRUCTIONS

